

 **ELVAL COLOUR**
Power to imagine



Texture concept colours

Elval Colour is a leading European coil coating supplier with a production of more than 35 million m² per year. With over 30 years of experience in coating and colour matching, Elval Colour is an excellent partner for your projects.

Elval Colour is member of the European Coil Coating Association (ECCA), the European Aluminium Association, and is ISO 9001-2008, ISO 14001-2004 and OHSAS 18001 certified.

Elval Colour's coated aluminium products are available in various colour shades presenting a wide selection of standard or custom made solutions for the building envelope. Applied by a sophisticated continuous coil coating process, our multilayer paint systems offer superior appearance and advanced resistance to aggressive weather conditions, polluted environments and UV-radiation.





920 TX Anthracite



942 TR Tile

Design tool for powerful building envelope solutions

The presented colour shades are based on metal chips, cut out from coated aluminium coils. As a consequence, they are well placed as colour matching samples. As with all coating procedures, especially for metallic colours, there might be a small degree of colour variation from batch to batch.

In order to ensure colour consistency, we recommend placing a project order in one batch. All metallic and Tx colours have to be installed following the arrow direction printed on the protective film and on the back side of the panel & coils in order to avoid colour variation.

The enclosed colours are available in 1250mm standard width. For tailor made projects special widths are available with a minimum quantity of 500m² per width and thickness.

For ENF™ and Orofe® products the enclosed colours can be ordered in standard widths 1200/1250/1500mm, starting from minimum order quantity of 1500m² per width and thickness.



942 TR Tile



933 TR Tile Red



932 TR Sienna Rosso



938 TR Beige Grey



931 TR Brown Grey



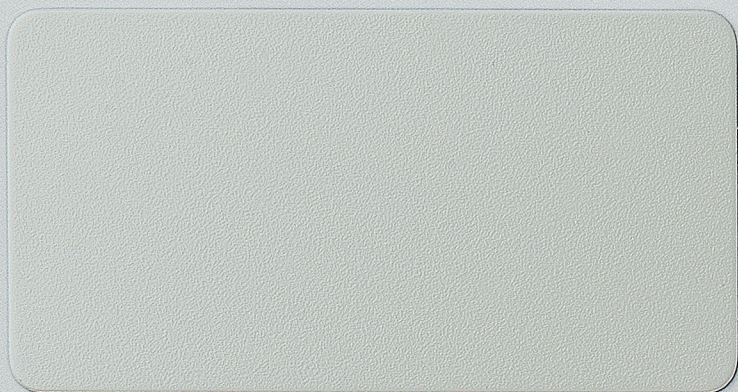
941 TR Quartz Grey



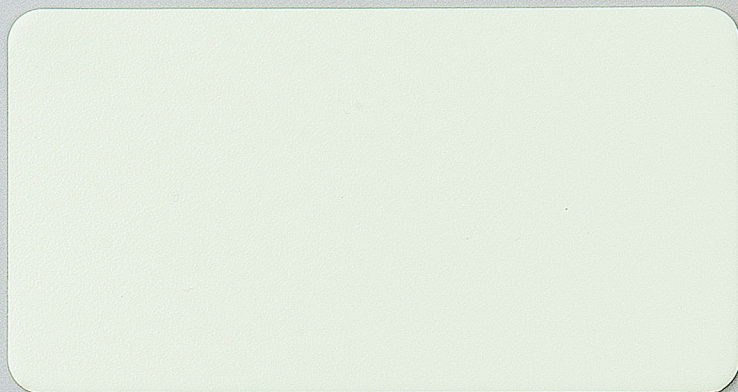
940 TR Griggio



944 TR Blue Grey



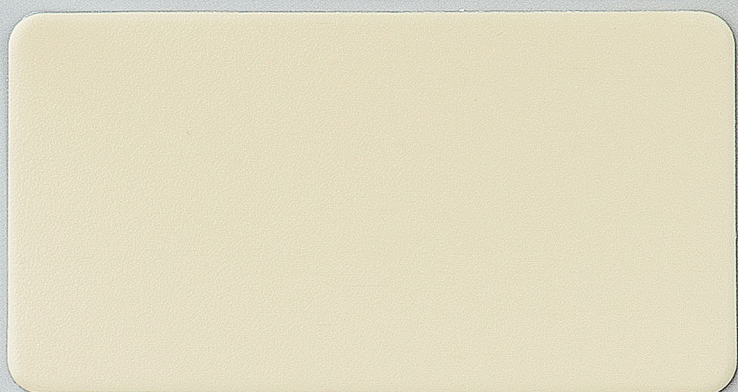
936 TR Mid Crème



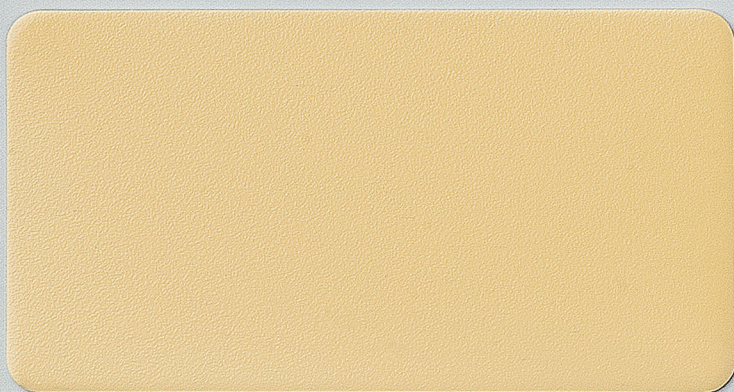
937 TR Crème



934 TR Marilion



935 TR Marilion Crème



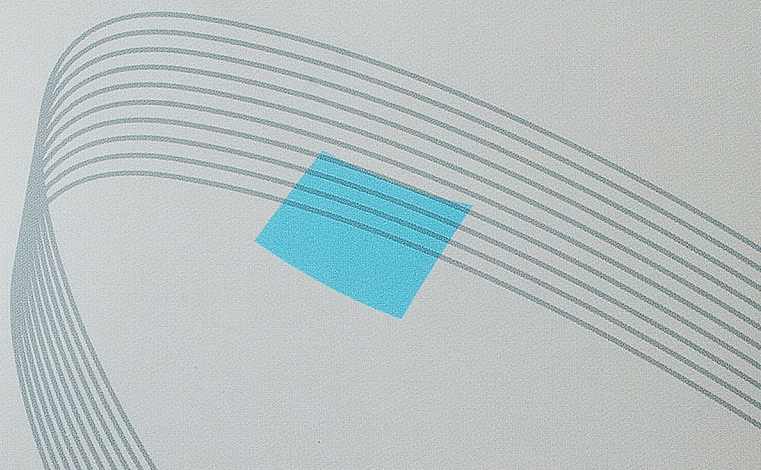
943 TR Marilion EG



939 TR Brazil

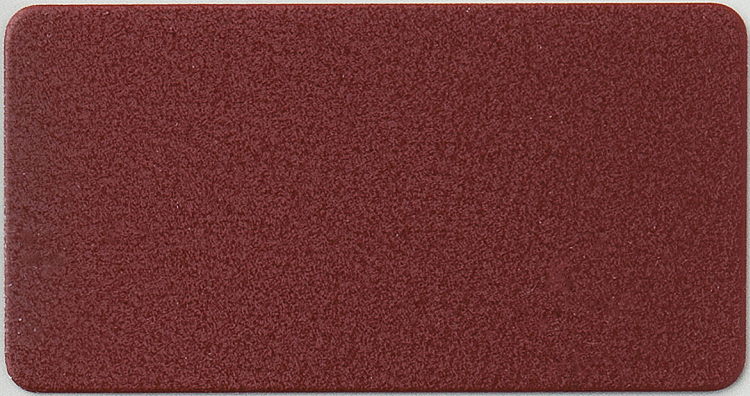


816 Basalt Black





920 TX Anthracite



921 TX Ceramic Red



923 TX Alpine Grey



919 TX Olive Brown



924 TX Velvet Grey



922 TX Metallic Grau



925 TX Velvet Zinc



926 TX Velvet Basalt

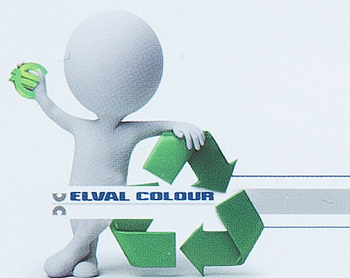
A friend to the environment

- Elval Colour products are available in a wide range of colours and coatings to match all building envelope façade & roofing requirements.
From scratch resistant to superior weathering performance and from vibrant to conservative shades ready to contribute to any architectural vision.
- Elval Colour uses coatings that are
 - Lead (Pb), Chrome (Cr) and Isophorone (IF) Free
 - REACH compliant as per 1907/2006/EU
 - RoHS compliant as per the Restriction of Hazardous Substances Directive 2002/95/EU
- Our coating process complies with all European norms and quality standards DIN, ASTM, BS, EN, ISO and ECCA, has a zero liquid waste discharge system and is fully compliant with the Industrial Emissions' Directive (IED) 2010/75/EU.

939 TR Brazil

Your Partner in unique façade creation

Our specialized personnel will assist you in identifying and implementing the best possible coating system for your building. Cost, quality, aesthetics and speed of delivery will be all optimized with a view to maximize the performance, weathering resistance, and visual impact of your project. For more information & guidelines, please contact www.elval-colour.com/en/contact



Elval Colour

3rd Km Inofyta Peripheral Rd.

32011, Saint Thomas, Viotia, Greece

tel: +30 22620 53564, fax: +30 22620 53581

ecs@elval.vionet.gr

www.elval-colour.com



ELVAL COLOUR
Power to imagine